

# Wireless Pro

## SCALE SYSTEMS



Rookie of the Year

Specialty Scale Systems

### Weigh Wireless with Intercomp!

Intercomp's Wireless Weighing Systems combine our ultra accurate Billet Scale Pads with Intercomp's tested and proven advanced wireless technology. Systems include a handheld PDA with Intercomp's Wireless Weighing Software and four Billet Scale Pads with Wireless Nodes to transmit data from the scale to the PDA.

## SW888™

SW888 Wireless ProScale 900 MHz  
Part # 170154 US Version  
SW888 Wireless ProScale 868 MHz  
Part # 170157 European Version



- 15" x 15" x 2.5" Billet Pads**
- 1,500 lb (700 kg) Pad Capacity
  - 6,000 lb (2,800 kg) System Capacity

## PERCENT WEIGH™

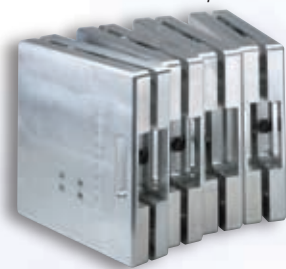
Displays setups to one hundredth of a percent!



- Included with system:**
- PDA
  - 5 Wireless Nodes
  - 5 Battery Chargers
  - Rechargeable Batteries
  - Storage Case

## SW8.8K™

SW888 Wireless ProScale 8.8K 4" 900 MHz  
Part # 170156 US Version  
SW888 Wireless ProScale 8.8K 4" 868 MHz  
Part # 170159 European Version



- 15" x 15" x 4" Billet Pads**
- 2,200 lb (1,000 kg) Pad Capacity
  - 8,800 lb (4,000 kg) System Capacity

## SW888™ KART

KART Wireless ProScale 900 MHz  
Part # 170169 US Version  
KART Wireless ProScale 868 MHz  
Part # 170170 European Version



- 10" x 10" Billet Pads**
- 400 lb (200 kg) Pad Capacity
  - 1,600 lb (800 kg) System Capacity



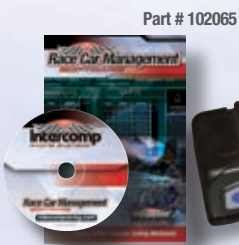
**Wireless Upgrade 900 MHz**  
Part # 170155 US Version  
**Wireless Upgrade 868 MHz**  
Part # 170158 European Version  
Requires Calibration of Scale Pads to wireless upgrade kit.

## SW888LE™

SW888LE Wireless ProScale 900 MHz  
Part # 170154-LE US Version  
SW888LE Wireless ProScale 868 MHz  
Part # 170157-LE European Version

- System includes:**
- 15" x 15" x 2.5" Deluxe Billet Pads
  - Thermal Printer
  - Race Car Management Software

**Optional Race Car Management Software & Thermal Printer!**



```
Intercomp
RaceWeigh-PDA
11/15/2006 11:10:07
Units: lb
LF: 187
RF: 222
LR: 185
RR: 207
Total: 801
Front: 409 / 51.1 %
Rear: 392 / 48.9 %
372 / 46.4 %
429 / 53.6 %
407 / 50.8 %
e: 22
```

Part # 340105

